



**ISFR**

**September 2014**

**January 31- February 7, 2015 Big Sky, Montana, USA**



The Rotary Club of Big Sky will host the North American week for the International Skiing Fellowship of Rotarians, January 31 – February 7, 2015.

Come and enjoy the Biggest Skiing in America on 5,750 acres (2,325 hectares), 4,350' vertical drop (1320 m), 22 chair lifts, 7 surface lifts, 250 named runs covering over 110 miles – all for one lift ticket. Big Sky has famous steep bowls, glades and black diamond challenges, but it is also a delight for the family skier. Three lifts serve only green runs, of which there are 48 on the mountain, and the 59 named blue runs will give you tons of cruising pleasure.

Big Sky is easy to get to with direct non-stop flights to Bozeman-Yellowstone International Airport (BZN) from over 12 cities in the US. Coach bus transportation, 45 miles down the beautiful Gallatin Canyon, will deliver you right to your hotel.

All accommodations for the ISFR have been arranged at Big Sky Resort's Huntley Lodge and Shoshone Hotel which share the same lobby and are just a few yards from the base area lifts.



Huntley Lodge \*\*\*



Shoshone Hotel \*\*\*\*

There is also plenty to do on your non-skiing days. Big Sky is the Base Camp to **Yellowstone Park**. The Park's NW corner is just 14 miles south of Big Sky and a day touring by snow coach, snowmobile, or cross country skis is a must. In addition to days on the slopes with our adaptive skier program, a day has also been arranged to go to Bozeman to tour the Eagle Mount facility for people with disabilities, and to see Montana Grizzly Encounter and the famous paleontology display at the Museum of the Rockies. Horseback riding, fly fishing in the blue ribbon Gallatin River, zip lining, snow shoeing, dog sledding, fur style shows, snow cat and sleigh ride dinners, and spa therapy are other popular options. If you like Cross Country, the #1 rated Nordic Skiing is at Lone Mountain Ranch, which is on the free shuttle bus route half-way between the Mountain and Meadow Village. Back Country adventures abound as well in the surrounding Gallatin National Forest as well as the NW corner of Yellowstone Park.

For those ISFR members who like skiing in the northern Rockies, the Rotary Club of Jackson Hole has arranged a 3 day extension to come either before or after Big Sky. You can preview the ISFR venue for 2017, and prolong your fun. Jackson Hole is about a 3 ½ hr drive south through Idaho and over Teton Pass. A car will be needed, as there is no bus service, and air connections are through Denver or Salt Lake City.

### **Program For The Week:**

#### **Sat. Jan 31:**

Registration and Welcome Reception

#### **Sun. Feb: 1**

9:00AM Guided mountain tours by local Rotarians  
Green groomers, blue cruisers, bumps and steeps  
4:00 PM: Super Bowl Party with food, games and things for the non-sports fans

#### **Mon. Feb. 2**

9:00 AM: Guided mountain tours by Local Rotarians  
"Tour of the Trees" (Glade skiing at its best)  
"Tour of the Moonlight side of the Mountain" (Easy Groomers on the north side)  
6:00 PM: Home Hospitality with local Rotarians

#### **Tues. Feb. 3:**

10:00 AM: Cross Country Skiing at Lone Mountain Ranch  
6:00 PM ISFR Annual General Meeting  
Dinner on your own at choice of restaurants

#### **Wed. Feb. 4**

12:00 PM: Lunch at Moonlight Lodge  
Ski in, drive, or take the shuttle bus  
5:30 PM: Big Sky Joint Rotary Meeting and Dinner  
Speaker: Rich Yehle, Yellowstone Park Ranger – Yellowstone Ecology

**Thur. Feb. 5:**

- All day: Yellowstone Snow Coach tours  
See bison, elk, mud pots, Old Faithful in warm comfort & back before 5
- 9:30 AM: Yellowstone backcountry XC skiing. Break trail with the Big Sky Snow Striders
- 6:00 PM: Farewell Gala Dinner and Auction

**Fri. Feb. 6:**

All Day Bozeman trip:

Take the coach bus to Bozeman to tour the Eagle Mount facilities that provide adaptive skiing, horseback riding, and swimming. Visit Montana Grizzly Encounter, and the Museum of the Rockies with their award winning exhibits of paleontology and Western culture. Downtown art gallery tour and lunch.

**Sat. Feb. 7:**

Departure day

Registration on line available at, [www.isfrski.org/](http://www.isfrski.org/)

**March 7–14, SAASS FEE, SWITZERLAND**

In March 2015, the Rotary Club of Saastal invites all ski-loving Rotarians to enjoy an unforgettable week of friendship and physical exercise in Saas Fee, the "Pearl of the Alps." Get to meet interesting friends from all over the world. Enrich your mind, experience genuine Rotary ideals and participate on the slopes in leisure skiing and different winter sports competitions.



Saas Fee, the attractive and car-free glacier village at 1800m altitude , surrounded by 13 over four-thousand meter mountain tops, is at the foot of the highest Swiss mountains. It received in 2012 the silver award for "Best Ski Resort ". We promise you a varied program, excellent organization and a week of fine fellowship in one of the most beautiful and attractive ski resorts in the world. Saas Fee and the Rotary Club of Saastal are looking forward to your visit.

**Program of the Week**

**Saturday March 7 Arrival Day**

- 09:00-18:30 Registration at your hotel or tourist office
- 16:00 Guided tour through Saas-Fee/historical and cultural background

- 18:00 Get together/welcome drinks
- 19:30 Dinner at your hotel
- 22:30 Nightcap at one of Saas-Fee's bars (tba)

### **Sunday March 8 Opening Day**

- 09:30 Meeting point for skiers at Alpin-Express valley station.  
Discover and enjoy the ski area and its winter sport options with local Rotarian guides
- 18:00 Opening Ceremony at the village Square/musical program/free drinks
- 19:30 Get together dinner with local Valais/Wallis specialties

### **Monday March 9 Ski Guiding Day/Training Day**

- 09:30 Meeting point for skiers Alpin-Express valley station welcomed by local Rotarians
- 12:30 Lunch at the Gletschergrotte mountain Restaurant  
Option: snowshoe hiking to the gletschergrotte restaurant
- 17:00-19:00 Rotary Meeting / Meeting point Metropol Keynote: "The Walser people"
- 19:30 Dinner at your hotel
- 22:30 Nightcap at one of Saas-Fee's bars (tba)

### **Tuesday March 10 Charity Day**

- 09:30 Meeting point for skiers at Alpin-Express valley station  
Skiing with young blind people and attendants
- 12:30 Lunch at Felskinn mountain restaurant  
Charity project press conference
- 17:30 Meeting point Hannig valley station/dinner and entertainment at Hannig summit
- 21:00 Torchlight night sledding to Saas-Fee

### **Wednesday March 11, 1<sup>st</sup> Competition Day Alpine Ski**

- 09:30 Number bibs distribution/giant slalom Stafelwald fun race for everyone
- 10:00 Start 1<sup>st</sup> race giant slalom
- 11:00 Start 2nd race giant slalom
- 12:00 Barbeque on the slopes or lunch at the Mistral in the village
- 14:00 Free skiing in the afternoon
- 17:00 Saaser Museum visit/history of Saas Valley
- 18:00-19:00 Rotary meeting at Metropol, keynote "Wines from the Valais"
- 19:30 Dinner at your hotel
- 22:30 Nightcap at one of Saas-Fee's bars (tba)

### **Thursday March 12, 2<sup>nd</sup> Competition Day – Nordic**

- 9:30 Number bibs distribution at the Round Church of Saas-Balen
- 10:00 Start cross country race Saas-Balen to Saas-Almagell  
Lunch at Olympia restaurant Saas-Almagell
- 12:30 Option 1, Winter hiking Saas-Grund to Saas-Amagell  
Option 2, Skiing in the Kreuzboden/Hohsaas-Grund area
- 16:30 Get together/meeting point Metropol, presentation: "Next ISFR Ski Meeting"

17:00-19:00 ISFR Committee Meeting  
19:30 Dinner at your hotel  
22:30 Nightcap at one of Saas-Fee's bars (tba)

**Friday March 13, 3<sup>rd</sup> Competition Day, Farewell Ceremony**

9:30 Meeting point valley station Plattjen/number bib distribution  
viewing point for Plattjen Giant Slalom  
10:30 Start 1<sup>st</sup> giant slalom race  
11:30 Start 2<sup>nd</sup> giant slalom race  
13:00 Lunch at Plattjen terminus Mountain Restaurant  
Option, Excursion, sunbathing and hiking Hannig  
19:00 Gala Dinner/races prize ceremony/entertainment by local village ensembles

**Saturday March 14, Departure Day**  
Individual departure or extended stay

Accommodation:  
Recommended Hotels



Ferienart Resort and Spa  
from CHF 190 per pax/night  
incl. half board \*\*\*\*\*



Best Western Metropol  
Hotel from CHF 150 per  
pax/night \*\*\*\*



Allalin Hotel  
from CHF 150 per pax/night  
\*\*\*\*

Accommodation and Registration available online at: <http://saas-fee2015.ch/typo3/index.php?id=2>.

## ANNUAL GENERAL MEETING

### Board of Directors Action

The ISFR fiscal year remains Jan. 1-Dec. 31.

### Membership Dues

Annual membership dues (June 1 – May 31) will remain at \$35.00 and will be due June 1. For Rotarians joining ISFR at the IR Convention and local Rotarians joining at annual ski week sites, the first year dues are reduced to \$10.00.





### **Treasurer's Report January 1 – December 31, 2013**

Income	\$92,306
Expenses	<u>\$84,741</u>
Net Income	\$ 7,565

### **Members of the 2013-14 Executive Committee**

Chair, President Tony Sheer  
President-Elect, Al Morris  
Secretary Treasurer, Lynne Beck  
Advisor, Marilyn Branch  
Past President, Esio Marzotto

### **Continuing Members of the ISFR Board of Directors**

#### **Regional Vice-Presidents**

Margaret Hutchinson VP UK - Jan Wold VP Scandinavia - Leon Koifman VP South America -  
Esio Marzotto VP Canada - Tony Sheer VP Australia.  
Erik Lammerts Van Bueren VP Europe.

**Directors at Large:** Drew Vactor, David Hoyt, Margaret Hutchinson, Marilyn Branch.

### **European Chapter Committee Members**

Erik Lammerts van Bueren - European Chapter Chairman,  
Rainer Reichert (Germany) - Secretary/PR coordinator, Erhard Veiter - Treasurer & Vice chair.  
Jan Wold - Competition officer.  
New European Chapter Committee members: Guy Delaval, RC Annecy (France); Bernhard  
Etienne, RC Luzern-Wasserturm, (Switzerland) and Anders Wattström, (Sweden).

### **North American Event Committee**

Chair - Tony Sheer, Finance - William Davis, Registration - Allyson Walter,  
Optional Events - Local Rotarians, Joel Burman, Accommodations - Al Morris + Local  
Rotarians,  
Local Rotary Club Liaison - Tony Sheer, Transportation - Al Morris,  
Fellowship - Tony Sheer, Local Rotary Club DBMF & Adaptive Program - Jeffrey Baltimore  
Sale of ISFR shirts, pins, etc. - Al Morris, Communications, Newsletters - Esio Marzotto,  
Event Adviser - Marilyn Branch, Practicality & Programming - Drew Vactor.

### **ISFR North American Chapter Board (proposed)**

Chair - Tony Sheer,  
Members - Al Morris, Esio Marzotto, Drew Vactor, William Davis, Margaret Blowey,

### **Membership Database**

North American Dues paid 243 - Data Base has 368 members.  
No monies or membership data available from the European Chapter.

### Future Ski Week Venues

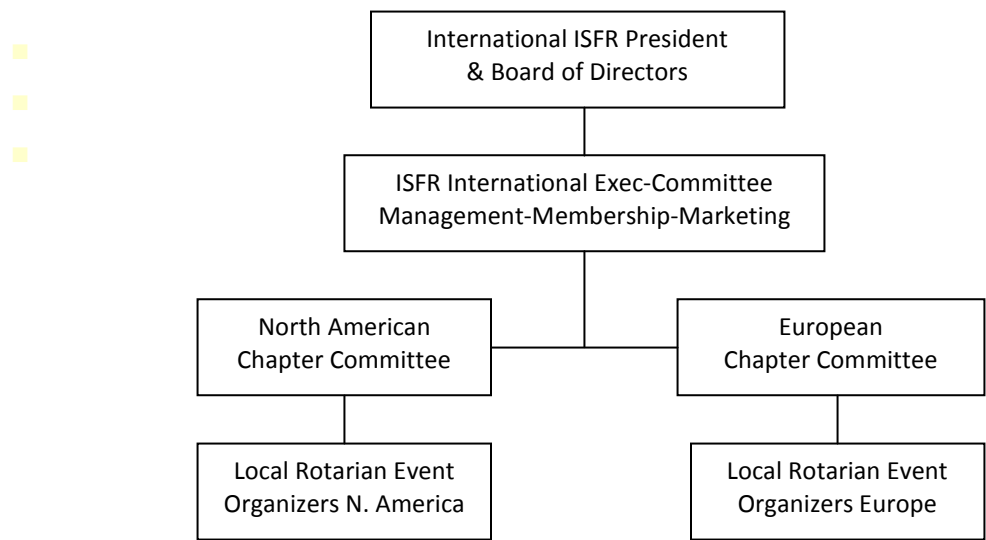
Jackson Hole, February 5 – 12, 2017, approved by the Board.

### Future Development of ISFR Organization

President Tony Sheer gave a presentation on the future development of ISFR with the creation of an overall International Committee, and two committees a North American and a European Chapter Committees for the organization of the two ski weeks. The following model was proposed and later presented to the AGM.

The new Model of ISFR proposes an organization with two (or more) chapters. The key role of the International Committee to be marketing and membership development, Two new committees would oversee the details of the ski weeks, working in conjunction with the local Rotary Clubs who succeeded in bids to host an event, The holding of the annual AGM, may/may not coincide with the ski week.

Whilst the B of D gave its support in principle to the development of ISFR, there was an acknowledgement that a number of issues required greater clarification.



### Committee to Consider Feasibility of Reorganization Created

Members representing current officers plus an administrator: Al Morris, Erik Lammerts van Bueren, Tony Sheer, Ben Lawton, to report to the ISFR Board of Directors at the next meeting in Big Sky in January 2015.

### Davis Boyd Memorial Foundation Committee

To consider the establishment of guidelines for selection of Ski Week locations with priority given to locations that support adaptive ski programs with local Rotary partners and that commit to fund raising activities during the ski week, e.g. raffles, auctions, ski races, etc. Resulting funds raised to be shared by ISFR and the local organizers (participating Rotary Clubs) in support of a local adaptive ski program.

## A SALUTE TO DON McLAURIN 1929-2014

By David Malaher

Don MacLaurin was the first person to tell me about the International Skiing Fellowship of Rotarians at a meeting of the Whistler Rotary Club the day after I arrived in Whistler in the fall of 1995. He and Isobel, he informed me, were signed up to attend the ISFR ski week the next February in Park City, Utah, and I really should not miss such a great event. Don and Izzy were unrivalled promoters of the ISFR from early days.



The coaxing could not be put aside and although Rosemary and I did not make it to Park City we signed up for the next year at Breckenridge. By that time I had come to recognize how well Don was regarded by his friends and colleagues in Whistler, by the city Council, the Parks and Recreation Department, the Ski Patrol and everyone in his Rotary Club. I was intrigued by the guests he frequently brought to meetings; business people, park designers, forestry scientists, community social activists and skiers from all over the world. Here, I realized, was a person to know and a person to take seriously.

Initially I did not know his key role in life was education. He was a professional Forester, teacher, environmentalist leader, naturalist, historian and all-round conscience for his community. And a darn good skier too. His influence and contacts were so broad that a focal point was almost wherever you thought it might be. After I recognized that Don's philosophy on life was centred on teaching people to do good things through science and community service I was glad to fall into line with his leadership. A year after I arrived in Whistler he told me that he needed someone to make a proposal to the ISFR to come to Whistler for a ski week and I was the person he had in mind.

One ISFR event led to the next. Don and Izzy could cause a social happening at the drop of a party hat. Odd costumes would appear on the ski hill to jazz up a fund-raiser and fancy cakes and cheeses were party-starters in their hotel rooms year after year in North America's finest ski towns. They would be the right guests to align with at the Home Hosting dinners. Who else do you know who has hosted their own Wake with a big party several years ahead of time?

The ISFR Ski Week in Banff was a special example of how to travel in style with the MacLaurins. As principal organizer for Banff I had to be there a few days ahead of time which prompted Don and Izzy to come along early as well. We skied together at Kicking Horse Resort in order to try it out as a special ski day away from Lake Louise and Sunshine, giving me a sense of relief that this new ski area was going to be a popular choice.





Don & Isobel McLaurin



Don & Isobel McLaurin, Rosemary & David Malaher

All the while, Don was a Board member of the ISFR and gave his good counsel to the organization while it was growing into today's well respected Rotary Fellowship. He encouraged the objective of helping adaptive skiing to become a central theme. The ISFR has seen many good Rotarians as members, skiers, Board volunteers and organizers. Don McLaurin hung up his skis for the last time in May this year (2014) counting his many years in the ISFR as one of his great pleasures and achievements in Rotary Community Service. Don died on May 27, 2014.

David Malaher  
July 26, 2014

## **CALENDAR**

BIG SKY, MONTANA, January 31 – February 7, 2015

SAAS -FEE, SWITZERLAND, March 7-14, 2015

CHAMONIX, FRANCE, February 2016

WHISTLER, CANADA, February 20-27, 2016

JACKSON HOLE, WYOMING February 5-12, 2017

For Details, [www.isfrski.org/](http://www.isfrski.org/)